

# Panasonic

DIGITAL IMAGING 2014

# Panasonic

## THE MOMENT. FOREVER YOURS.

Panasonic Marketing Europe GmbH. LUMIX is a brand name of Panasonic Corporation. The design and specification of products are constantly changing in the interest of improvement. Whilst every care has been taken in the preparation of this catalogue, some changes may not have been indicated and may have occurred after publication. Please check with your Panasonic dealer for details. Panasonic Marketing Europe GmbH cannot accept responsibility for any errors and omissions.

Registering the products gives you benefits like new information about your product, firmware updates and possible exclusive competitions.  
[www.panasonic.eu/register.html](http://www.panasonic.eu/register.html)

PANASONIC MARKETING EUROPE GMBH  
[WWW.PANASONIC.EU](http://WWW.PANASONIC.EU)

Printed in Germany



DIGITAL IMAGING 2014

### LF CREATIVE SERIES

Page 08 ▶



LF1



### TZ TRAVEL ZOOM SERIES

Page 14 ▶



TZ60  
TZ55



### LX CREATIVE SERIES

Page 09 ▶



LX7



### SZ STYLISH SERIES

Page 18 ▶



SZ8  
SZ3



### FZ/LZ SUPER ZOOM SERIES

Page 10 ▶



FZ200  
FZ72  
LZ40



### FT TOUGH SERIES

Page 20 ▶



FT5  
FT25



# Extraordinary Image Quality, Outstanding Performance

The fusion of world-leading Leica lenses and Panasonic digital technology gives LUMIX Cameras the industry's highest level of image quality and performance. And there is seemingly no end to the remarkable evolution. A newly developed, high-speed processing engine, a high-sensitivity sensor, and Nano Surface Coating technology produce greater beauty even in low-light shooting.

## Lens

### Superb Rendering Captures Even the Tiniest Details

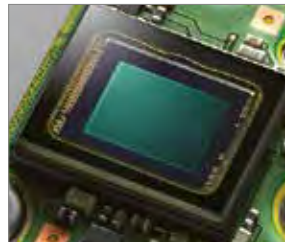
**LEICA DC LENS** The LEICA DC lens renders images in sharp, crisp clarity, with minimal distortion. Unique Panasonic optical technology fits an incredible field of view – from ultra-wide-angle to powerful telephoto – into the compact LUMIX body. Light reflection, which causes ghosts and flaring, is dramatically minimised by applying an extra-low refractive index coating with a nano-sized structure on the lens surface.



## Image Sensor

### New High-Sensitivity MOS Sensor Captures Stunning Low-Light Scenes

Stunning images not only need a superb lens but also a powerful image sensor. The majority of LUMIX Cameras feature either a newly developed High-Sensitivity MOS sensor delivering high performance in low-light scenes or a high-speed CCD sensor achieving high-sensitivity shooting and high-speed processing. Both MOS and CCD sensors deliver results with outstanding clarity at any sensitivity, from low to high.



## Engine

### A High-Performance LSI for HD Video Recording



With its exceptionally advanced signal processing capabilities, the Venus Engine achieves clear image rendering even at high ISO settings. Its capability also enables 1920 x 1080 50p Full HD Video Recording, high speed burst shooting and Light Speed AF (LX7, FZ200, TZ60, FT5).



Leica is a registered trademark of Leica Microsystems IR GmbH. Leica DC lenses are manufactured using measurement instruments and quality assurance systems that have been certified by Leica Camera AG based on the company's quality standards.



WITHOUT ZOOM



## Zoom and Wide-Angle

### Perfect Combination – Suitable for Every Situation

Especially for indoor and landscape photography, a wide-angle smaller than 28mm (35mm equivalent) makes a big difference. That's why LUMIX Cameras feature wide-angle lenses with a range down to 20mm. In addition, Panasonic took the zoom factor to the next level. With a zoom range comprising 12x (SZ8), 30x (TZ60) and 60x optical zoom (FZ72), Panasonic offers a LUMIX to suit your needs.



35MM STANDARD



WIDE 20MM (35MM CAMERA EQUIVALENT)

## Light Speed AF

### Ready When You Are

Timing is a critical element when it comes to taking great action shots – especially in sports when the subject is moving fast. Every fraction of a second matters when you want a perfect and precisely focused image. With the Panasonic Light Speed AF, you will never miss the perfect photo opportunity again.



CONVENTIONAL AF SYSTEM



LIGHT SPEED AF

# Unwire Your Creativity

Just download the Panasonic Image App to your smartphone or tablet, then wirelessly connect your mobile device to your LUMIX Camera<sup>1</sup> – it's extremely easy thanks to direct Wi-Fi capability.

The one-touch connection uses smart NFC technology, which allows you to connect both devices at a single touch. In an instant you can then use all the Camera's Wi-Fi features via the mobile device.

Record, watch and share your images and videos while on the go or at home.



The free Panasonic Image App allows you to use a wide variety of wireless functions on your smartphone or tablet. This application software is available for iOS and Android.



## Auto Transfer



Image data on your camera is automatically transferred to a computer or other compatible device via the wireless access point while the battery is charging.



## Cloud Sync



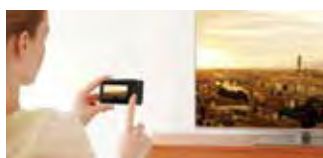
Whether you are on the go or travelling the world, transfer your photos from your LUMIX to the Cloud – all you need is a Wi-Fi hotspot. This way your SD Memory Card is ready for more shots and your pictures are stored safely in any situation.



## Wireless TV Playback



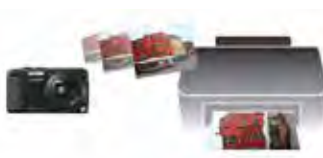
The Wi-Fi Direct™ feature enables you to directly view images or play back videos on a compatible big-screen VIERA HD TV – thanks to built-in DLNA (Digital Living Network Alliance) functionality.



## Wireless Print



Easily print out your pictures. Your LUMIX Camera featuring Wi-Fi lets you wirelessly print from a PictBridge™ (Wi-Fi-compatible) printer.



## One-Touch Connection



Thanks to built-in NFC (Near Field Communication), LUMIX makes it extremely easy for you to set up Wi-Fi between devices. Simply connect the LUMIX Camera to any NFC-compatible smartphone or tablet at a single touch and have instant access to all the Camera's Wi-Fi features from your mobile device.



## Touch and Share



You can also use the NFC function to easily transfer your photos from the LUMIX Camera to your smartphone or tablet installed with the Panasonic Image App.



## Remote Shooting



With the Panasonic Image App, you can use your smartphone or tablet as a remote control for your LUMIX Camera. It enables you to easily zoom, set the focus and shoot from a distance.



## Remote Browsing



Use the larger screen of your smartphone or tablet to view and enjoy the pictures that you have captured with your LUMIX. This makes it much easier to share the moment with a group of friends or family.



## Geotagging



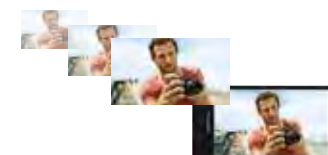
Wherever you are in the world, location information can be tagged to your photos using the convenient GPS function built into the LUMIX Camera<sup>2</sup> or your smartphone.



## Instant Transfer



Images being instantly displayed on your large screen tablet or smartphone as you shoot.



## Easy Share



Thanks to the Camera's built-in NFC, you can instantly upload your images to an SNS (Social Networking Service) and share them using your smartphone or tablet. It's easy! Images are transferred at a single touch.



<sup>1</sup> Wi-Fi feature not available in all LUMIX cameras <sup>2</sup> Only DMC-TZ60/DMC-FT5.

For the Love of Photography



DMC-LF1

COLOUR



Compact Quality and Creativity

- 28mm (F2.0) Wide-Angle LEICA DC VARIO-SUMMICRON Lens
- 7.1x Optical Zoom
- 12.1-Megapixel High-Sensitivity MOS Sensor
- POWER O.I.S.
- Electronic Viewfinder and 7.5cm (3.0-Inch) LCD Display
- Built-in Wi-Fi with One-Touch Connection (NFC)
- 1920 x 1080 Full HD Video Recording
- Creative Control and Creative Panorama



LUMIX



DMC-LX7

COLOURS



A New Level of Brightness

- 24mm (F1.4) Wide-Angle LEICA DC VARIO-SUMMILUX Lens
- 3.8x Optical Zoom
- 10.1-Megapixel High-Sensitivity MOS Sensor
- POWER O.I.S.
- 7.5cm (3.0-Inch) LCD Display
- 1920 x 1080 Full HD Video Recording
- Creative Control



Accessories for LX7

DMW-FL500

FLASH LIGHT



DMW-CLX7

CARRYING CASE



DMW-LVF2

LIVE VIEWFINDER



# FZ SUPER ZOOM



## Low Light and Zoom Specialist

The Panasonic FZ200 offers an incredible F2.8 value from 25mm Wide-Angle to 600mm Tele Zoom and was the first compact Digital Still Camera to offer this high sensitivity within the extreme tele area. Hence, even in this tele zoom area extremely fast shutter speeds can be reached.



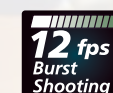
FULL ZOOM RANGE WITH F2.8

## Brilliant Full HD Video Recording



The Panasonic FZ200 records Full HD Video in 1920 x 1080p AVCHD and MP4 format with a frame rate up to 50fps (progressive). While recording the zooming function is ready to catch the perfect scene. In addition, the stereo zoom microphone is equipped with a noise cancelling functionality and the "Auto Cut" function will block disturbing background noise (e.g. caused by wind).

## Light Speed AF and High Speed Burst Shooting



Light Speed AF (auto focus) combined with the FZ200's ability to capture high speed burst shooting at 12 fps (frames per second) in full resolution and a quick start-up time of approximately 0.95 seconds, ensures that users never miss even the most fleeting shooting opportunities.

# Unlimited Versatility



DMC-FZ200

COLOUR



## Full-Range F2.8 Zoom with Full HD Video

- 25mm Wide-Angle LEICA DC VARIO-ELMARIT Lens
- 24x Optical Zoom
- 12.1-Megapixel High-Sensitivity MOS Sensor
- POWER O.I.S. with Active Mode
- Electronic Viewfinder and Flipable 7.5cm (3.0-Inch) LCD Display
- 1920 x 1080 (50p) Full HD Video Recording



## Accessoires for FZ200

### DMW-LT55

1.7X TELE CONVERSION LENS

In combination with lens adaptor DMW-LA5



### DMW-MS1

STEREO MICROPHONE



# LUMIX

DMC-FZ72

COLOUR



## Ultra Zoom Camera

- 20mm Ultra Wide-Angle
- 60x Optical Zoom
- 16.1-Megapixel MOS Sensor
- POWER O.I.S. with Active Mode
- 7.5cm (3.0-Inch) LCD Display
- 1920 x 1080 Full HD Video Recording



DMC-LZ40

COLOUR



## Super Zoom Camera

- 22mm Wide-Angle
- 42x Optical Zoom
- 20-Megapixel CCD Sensor
- Optical Image Stabiliser (O.I.S.)
- 7.5cm (3.0-Inch) LCD Display
- Creative Control



# TZ TRAVEL ZOOM



## The World's Slimmest<sup>1</sup> 30x Optical Zoom Lens

**30x**  
Optical Zoom

LEICA  
DC LENS

Although small in size, the LEICA DC lens offers exceptional optical performance that meets the stringent quality standards established by Leica. Crystalizing its optical technologies, Panasonic succeeded in integrating the 24mm ultra wide-angle 30x zoom lens in a slim, flat body.

<sup>1</sup> As a digital camera with an optical zoom lens of 30x, as of January 6, 2014.

### Live View Finder for Perfect Image Control



The built-in Live View Finder assures stable framing even while zooming and high visibility of the live view image, even under strong sunlight. As an option, it can be set to 60fps to smoothly display fast-moving subjects. The approx. 2.56x magnification and 100% field of view enable clear and crisp viewing.



### Manual Control for Utmost Creative Expression



The Control Ring enables direct, intuitive control over frequently-used settings – zooming, aperture, shutter speed, ISO sensitivity and manual focusing. For more practical control over manual focusing, Focus Peaking is available even while remote-controlling the camera via Wi-Fi®.





# Pack Light for Great Images



## DMC-TZ60

COLOURS



### All-In-One Compact Travel Camera

- 24mm Wide-Angle LEICA DC VARIO-ELMAR Lens
- 30x Optical Zoom
- Live View Finder (LVF)
- Manual Control Functions
- Built-in Wi-Fi with One-Touch Connection (NFC)
- 1920 x 1080p Full HD Video Recording



# LUMIX

## DMC-TZ55

COLOURS



### Travel Camera with Tilttable Display

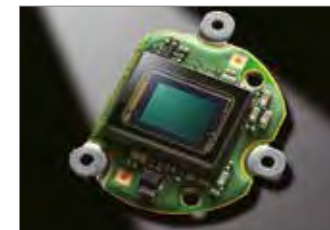
- 24mm Wide-Angle Lens
- 20x Optical Zoom
- 16.1-Megapixel High-Sensitivity MOS Sensor
- Tilttable LCD approx. 180°
- Built-in Wi-Fi
- 1920 x 1080 Full HD Video Recording



### Full HD Video Recording



The High-Sensitivity MOS sensor and Venus Engine feature high speed, high sensitivity image recording. As a result, smooth Full HD 1920x1080 50p<sup>1</sup> video recording can be realised.



### Easy Self Portraits with Tilttable LCD Screen

The screen of the TZ55 can be flipped vertically with an angle of approx. 180°. When rotating the monitor, the Self Shot Mode is automatically turned on for activating further settings such as self timer, burst shooting and soft skin mode. Hence, shooting self portraits has never been so easy.



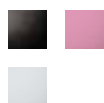
<sup>1</sup> only TZ60



LUMIX

DMC-SZ8

COLOURS



**Stylish and Compact**

- 24mm Wide-Angle Lens
- 12x Optical Zoom
- 16-Megapixel CCD Sensor
- Built-in Wi-Fi
- 1280 x 720 HD Video Recording
- Optical Image Stabiliser



**Versatile Zoom Range in a Slim Body**



The pocket-sized Panasonic SZ8 boasts a 12x optical zoom and 24mm wide-angle lens, providing the quality and versatility needed to capture every kind of shooting situation in stunning detail.

**Creative Panorama**

With the Creative Panorama function, it is possible to apply 13 filter effects to the panoramic image, which can be shot by sweeping the camera.



IMPRESSIVE ART - PHOTO BY KEN DUNCAN

**Creative Control**

You can add 15 artistic effects to your images by applying a filter both in the recording mode (Creative Control) and the playback mode (Creative Retouch).



ONE POINT COLOUR

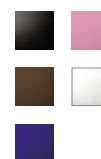


Compact Companions



DMC-SZ3

COLOURS



**High-Quality Zoom Lens**

- 25mm Wide-Angle LEICA DC VARIO-ELMAR Lens
- 10x Optical Zoom
- 16.1-Megapixel High-Sensitivity CCD Sensor
- MEGA O.I.S.
- 1280 x 720 HD Video Recording
- Creative Control and Creative Panorama



# FT5 TOUGH SERIES



## More Action in Your Photography

The LUMIX FT5 is ready for you – extremely tough and equipped with the latest technology. Besides its toughness (13m waterproof, 2m shockproof, -10°C freezeproof, dustproof and 100kg pressure resistance) the camera features 50p Full HD Video Recording, Altimeter & Barometer, GPS and Wi-Fi connectivity combined with one-touch connection NFC (Near Field Communication) to easily control functions via smartphone or tablet. No matter whether you dive, climb, ski or cycle – the LUMIX FT5 is your perfect outdoor companion. Furthermore, the GPS function is a true highlight during your photo show – it easily records where your images were taken and creates a travel route.

FT5



Compass

Altimeter

GPS

Barometer

Wi-Fi

# Get Great Images Anywhere



## DMC-FT5

COLOURS



### The Ultimate Tough Camera with Wi-Fi

- 28mm Wide-Angle LEICA DC VARIO-ELMAR Lens
- 4.6x Optical Zoom
- POWER O.I.S.
- Wi-Fi Connectivity with One-Touch Connection (NFC)
- Geotagging with Built-In GPS
- 1920 x 1080 50p Full HD Video Recording



# LUMIX

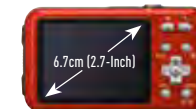
## DMC-FT25

COLOURS

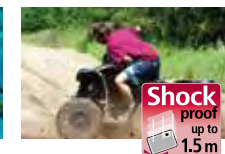


### Ready for Action

- 7m Waterproof Advanced, 1.5m Shockproof, -10°C Freezeproof and Dustproof
- 25mm Wide-Angle LUMIX DC Lens
- 4x Optical Zoom
- 16.1-Megapixel High-Sensitivity CCD Sensor
- MEGA O.I.S. with Active Mode
- Creative Control and Creative Panorama



### Properties of FT25



### Accessories for FT5 and FT25

#### DMW-CFT1E-D

CASE



#### VW-PKSS2

NEOPREN HANDLOOP



#### DMW-BCM13/BCK7

BATTERY



#### DMW-MCFT5

MARINE CASE



## Best Performance with Original Accessories

### Batteries

Be on the safe side with Panasonic Lithium Ion batteries that ensure highest performance, durability and are protected against overheating and leakage.

DMW-BLC12  
DMW-BMB9  
DMW-BCL7  
DMW-BCM13  
DMW-BCG10  
DMW-BCK7  
DMW-BCJ13  
DMW-BCN10



### Bags

Carry your camera with high quality LUMIX cases. Their design is modest but premium and the soft lining protects the camera from scratches.

DMW-CLX7  
DMW-PHH14XEK  
DMW-PZH07XEK  
DMW-PSS03XEK



### Flashes

Use Panasonic flashes to perfectly illuminate your motifs and sceneries. Panasonic flashes are powered by separate batteries and can be swiveled to ensure perfect lighting in any situation.

DMW-FL220  
DMW-FL360  
DMW-FL500  
DMW-FL580L



### Lenses & Filters

Expand the range of photographic effects using additional lenses and filters, e.g. using an ND filter on bright and sunny days to prevent overexposure or enable longer exposure times.

DMW-FA1  
DMW-LPLA37  
DMW-LPL52  
DMW-LND37  
DMW-LND52  
DMW-LMCH37  
DMW-LMCH52



### Marine Case

Take the perfect underwater shots using a Panasonic marine case. The convenient and easy to use cases can be used up to a depth of 45m.

DMW-MCTZ40  
DMW-MCTZ35  
DMW-MCFT5



Features

Features	Creative		Super Zoom			Travel		Stylish		Tough	
	LX7	LF1	FZ200	FZ72	LZ40	TZ60	TZ55	SZ8	SZ3	FT5	FT25
LEICA DC Lens				-	-		-	-			-
Optical Zoom											
Intelligent Zoom											
Wide-Angle											
Image Stabiliser											
HD Video Recording											
Image Sensor											
Lores Insum					-			-			
LCD Display											
View Finder	-				-		-	-	-	-	-
Wi-Fi	-		-	-	-						
GPS	-	-	-	-	-		-	-	-	-	
Creative Control											
Creative Panorama	-		-								
Intelligent Auto											
Special Features	-		-		-		-	-			-
Charging Options	-		-	-						-	-

Leica is a registered trademark of Leica Microsystems IR GmbH. Leica DC lenses are manufactured using measurement instruments and quality assurance systems that have been certified by Leica Camera AG based on the company's quality standards. The Wi-Fi CERTIFIED Logo is a certification mark of the Wi-Fi Alliance.





LUMIX Digital Still Camera

Optics	Pixels	12.1-Megapixels	10.1-Megapixels	12.1-Megapixels	
	CCD	Effective Pixels: 12.1-Megapixels Sensor Size: 1/1.7-type High-Sensitivity MOS Sensor Aperture: F2.0 - 5.9	Effective Pixels: 10.1-Megapixels Sensor Size: 1/1.7-type High-Sensitivity MOS Sensor Aperture: F1.4 - 2.3	Effective Pixels: 12.1-Megapixels Sensor Size: 1/2.3-type High-Sensitivity MOS Sensor Aperture: F2.8	
	Lens	Optical Zoom	7.1x	3.8x	24x
		Focal Length	f = 6.0 - 42.8mm (28 - 200mm in 35mm equiv.) (31 - 220mm in 35mm equiv. in video recording)	f=4.7-17.7mm (24-90mm in 35mm equiv.)	f=4.5-108mm (25-600mm in 35mm equiv.) (28-672mm in 35mm equiv. in video recording)
		Intelligent Zoom	14.3x	7.5x	48x
	Focus	AF Metering	Face / AF Tracking / 23-Area / 1-Area	Face / AF Tracking / 23-Area / 1-Area (flexible/scalable)	Face / AF Tracking / 23-Area / 1-Area (flexible/scalable)
Shutter	Shutter Speed	approx. 250 - 1/4000 sec	approx. 250 - 1/4000 sec	approx. 250 - 1/4000 sec (Creative Video Mode: approx. 1/8 - 1/20000 sec)	
Image Stabilisation	Optical Image Stabiliser for Photo/Movie	POWER O.I.S.	O.I.S.	POWER O.I.S. (with Active Mode for motion picture)	
	Recording Modes	Continuous Shooting Mode: Full-Resolution Image: 10 frames/sec, Max. 12 images with AF Tracking; 5 frames/sec, 2 frames/sec High-Speed Burst Mode: approx. 60 frames/sec (speed priority) approx. 40 frames/sec (picture quality priority)	Full-Resolution Image: 11 frames/sec Max. 12 images with AF Tracking; 5.5 frames/sec, 2 frames/sec approx. 60 frames/sec (recorded in 2.5M) approx. 40 frames/sec (recorded in 5M)	Full-Resolution Image: 12 frames/sec Max. 12 images with AF Tracking; 5.5 frames/sec, 2 frames/sec Intelligent Burst Shooting approx. 60 frames/sec (recorded in 2.5M) approx. 40 frames/sec (recorded in 5M)	
Exposure Parameters	Exposure	Programme AE, Aperture Priority AE, Shutter Priority AE, Manual	Programme AE, Aperture Priority AE, Shutter Priority AE, Manual	Programme AE, Aperture Priority AE, Shutter Priority AE, Manual	
	ISO Sensitivity	Auto / iISO / 80 / 100 / 200 / 400 / 800 / 1600 / 3200 / 6400 / 12800 (Extended)	Auto / iISO / 80 / 100 / 200 / 400 / 800 / 1600 / 3200 / 6400 / 12800 / 12800 (Extended)	Auto / iISO / 80 / 100 / 200 / 400 / 800 / 1600 / 3200 / 6400 / 12800 / 12800 (Extended)	
	Still Picture Recording	2992x2992 (9M) / 2448x2448 (6M EZ) / 1920x1920 (3.5M EZ) / 1536x1536 (2.5M EZ) / 480x480 (0.2M EZ)	2736x2736 (7.5M) / 2304x2304 (5.5M EZ) / 1920x1920 (3.5M EZ) / 1536x1536 (2.5M EZ) / 480x480 (0.2M EZ)	2992x2992 (9M) / 2448x2448 (6M EZ) / 1920x1920 (3.5M EZ) / 1536x1536 (2.5M EZ) / 480x480 (0.2M EZ)	
Motion Picture Recording	HD Movie Recording (max resolution) AVCHD / AVCHD Lite / MP4 / Motion JPEG	1920x1080 pixels, 50p (FHD: 17Mbps / AVCHD) (Sensor Output is 50fps) 1920x1080 pixels, 25fps (FHD: 20Mbps / MP4) (Sensor Output is 25fps)	1920x1080 pixels, 50p (PSH: 28Mbps / AVCHD) (Sensor Output is 50fps) 1920x1080 pixels, 25fps (FHD: 20Mbps / MP4) (Sensor Output is 25fps)	1920x1080 pixels, 50p (PSH: 28Mbps / AVCHD) (Sensor Output is 50fps) 1920x1080 pixels, 25fps (FHD: 20Mbps / MP4) (Sensor Output is 25fps)	
	Zoom in Motion Picture	-	-	-	
Picture Effects	Picture Mode	Standard, Happy (only in iA Mode), Black and White, Sepia	-	-	
	Creative Control	Expressive, Retro, Old Days, High Key, Low Key, Sepia, Dynamic Monochrome, Impressive Art, High Dynamic, Cross Process, Toy Effect, Miniature Effect, Soft Focus, Star Filter, One Point Colour (15 filters)	Expressive, Retro, High Key, Low Key, Sepia, Dynamic Monochrome, Impressive Art, High Dynamic, Cross Process, Toy Effect, Miniature Effect, Soft Focus, Star Filter, One Point Colour, Radial Defocus, Smooth Defocus	Expressive, Retro, High Key, Low Key, Sepia, Dynamic Monochrome, Impressive Art, High Dynamic, Cross Process, Toy Effect, Miniature Effect, Soft Focus, Star Filter, One Point Colour, Radial Defocus, Smooth Defocus	
Other	Auto Retouch	-	-	•/Creative	
	Digital Red Eye Correction (Red-Eye Removal)	-	-	•	
Playback	Display	Playback Mode: Normal Playback, Slideshow, Filtering Playback Picture Only, Video Only, 3D, Category Selection, Select Date, Favourites, Calendar Search	Normal Playback, Slideshow, Filtering Playback (Picture Only, Video Only, 3D, Category, Favourites), Calendar Search	Normal Playback, Slideshow, Filtering Playback (Picture Only, Video Only, 3D, Category, Favourites), Calendar Search	
	Monitor	LCD Monitor: 7.5cm (3.0") TFT LCD Display (920K dots), AR Coating	7.5cm (3.0") TFT LCD Display (920K dots), AR Coating	7.5cm (3.0") Free-Angle TFT LCD Display (460K dots), AR Coating	
Others	Flash	Built-in-Flash	-	-	
	Audio	Microphone / Speaker	Stereo / •	Stereo / •	
	Interface	microHDMI, miniHDMI, AV Output (PAL / NTSC), USB (AV / USB Multi)	• / • / • (Multi)	• / • / • (Multi)	
	Power	Power	Li-ion Battery Pack (3.7V, Minimum: 950mAh) AC Adaptor (Input: 110-240V AC) (Included)	Li-ion Battery Pack (3.7V, Minimum: 1250mAh) (Included) AC Adaptor (Input: 110-240V AC) (Optional)	Li-ion Battery Pack (3.7V, Minimum: 1200mAh) AC Adaptor (Input: 110-240V AC) (Optional)
		Battery life (approx.)	250 pictures (CIPA Standard)*	330 pictures (CIPA Standard)*	540 pictures (CIPA Standard)*
	Metrics	Dimensions (W x H x D)	102.5 x 62.1 x 27.9mm	110.5 x 67.1 x 46.6mm	125.2 x 86.6 x 110.2mm
Weight (without battery and SD Memory Card)		Approx. 170g	Approx. 269g	Approx. 537g	
Additional Features	Special Features	Wi-Fi / NFC / Viewfinder	Manual Operation, Dedicated Aperture Dial, Integrated ND Filter	-	

\* Yes - No

<sup>1</sup> Motion pictures can be recorded continuously for up to 15 minutes in European PAL area.

LUMIX Digital Still Camera

						
		DMC-FZ72	DMC-LZ40	DMC-TZ60	DMC-TZ55	
Optics	Effective Pixels	16.1-Megapixels	20-Megapixels	18.1-Megapixels	16-Megapixels	
	CCD	1/2.3-type High-Sensitivity MOS Sensor	1/2.3-type CCD Sensor	1/2.3-type High-Sensitivity MOS Sensor	1/2.33-type High-Sensitivity MOS Sensor	
	Aperture	F2.8 - 5.9	F3.0 - 6.5	F3.3 - 6.4	F3.3 - 6.4	
	Optical Zoom	6.0x	4.2x	3.0x	2.0x	
	Focal Length	f = 4.0 - 215.5mm (20 - 1200mm in 35mm equiv.) (122 - 1320mm in 35mm equiv. in video recording)	f = 4.0 - 168.0mm (22 - 924mm in 35mm equiv.) (24 - 1007mm in 35mm equiv. in 16:9 video recording)	f = 4.3 - 129mm (24 - 720mm in 35mm equiv.) (28 - 940mm in 35mm equiv. in 16:9 video recording / Level Shot function Off) (30 - 900mm in 35mm equiv. in 16:9 video recording / Level Shot function On)	f = 4.3 - 86.0mm (24 - 480mm in 35mm equiv.) (28 - 560mm in 35mm equiv. in 16:9 video recording)	
Intelligent Zoom	12.0x	8.4x	4.0x	6.0x		
Focus	AF Metering	Face / AF Tracking / 23-area / 1-area (flexible / scalable)	Face / AF Tracking / 1-area / 9-area / Spot	Face / AF Tracking / 23-area / 1-area (flexible / scalable)	Face / AF Tracking / 21-area / 1-area / Spot	
Shutter	Shutter Speed	approx. 8 - 1/2000 sec	approx. 15 - 1/1500 sec	approx. 4 - 1/2000 sec	approx. 4 - 1/2000 sec	
Image Stabilisation	Optical Image Stabilizer for Photo / Movie	POWER O.I.S.	O.I.S.	HYBRID O.I.S. +	POWER O.I.S.	
	Continuous Shooting Mode	Full-Resolution Image: 9 frames/sec. Max. 3 images with AF Tracking; 5 frames/sec, 2 frames/sec	Full-Resolution Image: 1.1 frames/sec	Full-Resolution Image: 10 frames/sec. Max. 6 images with AF Tracking; 5 frames/sec, 2 frames/sec Intelligent Burst Shooting	Full-Resolution Image: 10 frames/sec. Max. 10 images	
Recording Modes	High-Speed Burst Mode	approx. 10 frames/sec (recorded in 3M for 4.3, 2.5M for 3.2, 2M for 16.9, 2.5M for 1:1) Flash Burst Shooting	approx. 3 frames / sec (recorded in 3M for 4.3, 2.5M for 3.2, 2M for 16.9, 2.5M for 1:1)	approx. 40 frames / sec (recorded in 2.5M / 0.3M for 4.3, 3M / 0.3M for 3.2, 3.5M / 0.2M for 16.9, 2M / 0.2M for 1:1) approx. 40 frames / sec (recorded in 5M / 0.3M for 4.3, 4.5M / 2.5M / 0.3M for 3.2, 3.5M / 0.2M for 16.9, 3.5M / 2.5M / 0.2M for 1:1) Flash Burst Shooting	approx. 10 frames / sec (recorded in 3M for 4.3, 2.5M for 3.2, 2M for 16.9, 2.5M for 1:1) Flash Burst Shooting	
	Exposure	Programme AE, Aperture Priority AE, Shutter Priority AE, Manual	Programme AE, Manual	Programme AE, Aperture Priority AE, Shutter Priority AE, Manual	Programme AE, Aperture Priority AE, Shutter Priority AE, Manual	
Recording	ISO Sensitivity	Auto / i.LISO / 100 / 200 / 400 / 800 / 1600 / 3200 (Changeable to 1/3 EV step) High-Sensitivity Mode (ISO1600 - 6400)	Auto / i.LISO / 100 / 200 / 400 / 800 / 1600 / 3200 High-Sensitivity Mode (ISO1600 - 6400)	Auto / i.LISO / 100 / 200 / 400 / 800 / 1600 / 3200 / 6400 <sup>1</sup> * Extended ISO) High-Sensitivity Mode (ISO1600 - 6400)	Auto / i.LISO / 100 / 200 / 400 / 800 / 1600 / 3200 High-Sensitivity Mode (ISO1600 - 6400)	
	Still Picture Recording 1.1 / 4:3 / 3:2 / 16:9	3456x3456 (12M) / 2736x2736 (7.5M EZ) / 2304x2304 (5.5M EZ) / 1920x1920 (3.5M EZ) / 1536x1536 (2.5M EZ) / 480x480 (0.2M EZ)	3856x3856 (16M) / 1536x1536 (2.5M EZ)	3664x3664 (13.5M) / 2992x2992 (9M EZ) / 2448x2448 (6M EZ) / 1920x1920 (3.5M EZ) / 1536x1536 (2.5M EZ) / 480x480 (0.2M EZ)	3456x3456 (12M) / 1536x1536 (2.5M EZ)	
		4608x3456 (14M) / 3648x2736 (10M EZ) / 3072x2304 (7M EZ) / 2560x1920 (5M EZ) / 2048x1536 (3M EZ) / 640x480 (0.3M EZ)	5152x3864 (20M) / 3264x2448 (8M EZ) / 2048x1536 (3M EZ) / 640x480 (0.3M EZ)	4896x3672 (18M) / 4000x3000 (12M EZ) / 3264x2448 (8M EZ) / 2560x1920 (5M EZ) / 2048x1536 (3M EZ) / 640x480 (0.3M EZ)	4608x3456 (16M) / 3264x2448 (8M EZ) / 2048x1536 (3M EZ) / 640x480 (0.3M EZ)	
		4608x3072 (14M) / 3648x2736 (10M EZ) / 3072x2304 (7M EZ) / 2560x1920 (5M EZ) / 2048x1536 (3M EZ) / 640x480 (0.3M EZ)	5152x3432 (17.5M) / 3264x2176 (7M EZ) / 2048x1360 (2.5M EZ)	4896x3264 (16M) / 4000x2672 (10.5M EZ) / 3264x2176 (7M EZ) / 2560x1920 (5M EZ) / 2048x1360 (2.5M EZ)	4608x3072 (14M) / 3264x2176 (7M EZ) / 2048x1360 (2.5M EZ)	
		4608x2592 (12M) / 3648x2056 (7.5M EZ) / 3072x1728 (5.5M EZ) / 2560x1440 (3.5M EZ) / 1920x1080 (2M EZ) / 640x360 (0.2M EZ)	5152x2896 (14.5M) / 1920x1080 (2M EZ)	4896x2752 (13.5M) / 4000x2248 (9M EZ) / 3264x1840 (6M EZ) / 2560x1440 (3.5M EZ) / 1920x1080 (2M EZ) / 640x360 (0.2M EZ)	4608x2592 (12M) / 1920x1080 (2M EZ)	
HD Movie Recording (max resolution) AVCHD / AVCHD Lite / MP4 / Motion JPEG	1920x1080 pixels, 50p (FSH: 17Mbps/AVCHD) (Sensor Output is 25fps) 1280x720 pixels, 50p (SH: 17Mbps/AVCHD) (Sensor Output is 25fps) 1920x1080 pixels, 25p (FHD: 20Mbps/MP4) (Sensor Output is 25fps) 1280x720 pixels, 25p (HD: 10Mbps/MP4) (Sensor Output is 25fps)	1280 x 720 pixels, 30fps (HD/Motion JPEG)	1920x1080 pixels, 50p (FHD: 28Mbps/AVCHD) (Sensor Output is 50fps) 1920x1080 pixels, 50p (FHD: 17Mbps/AVCHD) (Sensor Output is 50fps) 1280x720 pixels, 50p (HD: 17Mbps/AVCHD) (Sensor Output is 50fps) 1920x1080 pixels, 25p (FHD: 20Mbps/MP4) (Sensor Output is 25fps) 1280x720 pixels, 25p (HD: 10Mbps/MP4) (Sensor Output is 25fps)	1920x1080 pixels, 25p (FHD: 20Mbps/MP4) (Sensor Output is 25fps)		
Zoom in Motion Picture	•	•	•	•		
Picture Effects	Colour Mode	Standard, Black & White, Sepia, Happy (only in iA Mode)	-	-	-	
	Creative Control	15 filter effects	15 filter effects	15 filter effects	15 filter effects	
Other	Digital Red Eye Correction (Red-Eye Removal)	• (On / Off)	• (On / Off)	• (On / Off)	• (On / Off)	
Playback	Display	Playback Mode	Normal Play, Slide Show, Category Selection	All, Slideshow, Filtering Play (Picture Only, Video Only, 3D Play, GPS Area Play, Travel, Category Selection, Select Date, Favourite), Calendar	All, Slideshow, Filtering Play (Picture Only, Video Only, 3D Play, GPS Area Play, Travel, Category Selection, Select Date, Favourite), Calendar	
	Monitor	7.5cm (3.0") TFT Screen LCD Display (460K dots), AR Coating	7.5cm (3.0") TFT Screen LCD Display (460K dots)	7.5cm (3.0") TFT Screen LCD Display (460K dots), AR Coating	7.5cm (3.0") TFT Screen LCD Display (460K dots), Tiltable monitor	
Others	Flash	Built-in Flash	•	•	•	
	Audio	Microphone / Speaker	Stereo / Mono	Mono / Mono	Stereo / Mono	
	Interface	microHDMI, miniHDMI, AV Output (PAL / NTSC), USB / USB Multi	- / - / • / • (Multi)	- / - / • / • (Multi)	• / - / • / • (Multi)	- / - / • / • (Multi)
	Power	Power	Li-ion Battery Pack (7.2V, 895mAh, 6.5Wh) (Included) AC Adaptor (Input: 110 - 240V AC) (Optional)	Li-ion Battery Pack (3.6V, 1250mAh, 4.5 Wh) (Included) AC Adaptor (Input: 110 - 240V AC) (Included)	Li-ion Battery Pack (3.6V, 1250mAh, 4.5 Wh) (Included) AC Adaptor (Input: 110 - 240V AC) (Included, connect with USB cable)	Li-ion Battery Pack (3.6V, 1250mAh, 4.5 Wh) (Included) AC Adaptor (Input: 110 - 240V AC) (Included, connect with USB cable)
	Metrics	Battery Life (approx.) Dimensions (W x H x D) Weight <sup>2</sup>	400 pictures (CIPA Standard) <sup>1</sup> 130.2 x 97.0 x 118.2mm approx. 562g	320 pictures (CIPA Standard) <sup>1</sup> 126.4 x 86.6 x 94.2mm approx. 498g	300 pictures (CIPA Standard) <sup>1</sup> 110.6 x 64.3 x 34.4mm approx. 214g	350 pictures (CIPA Standard) <sup>1</sup> 106.8 x 62.2 x 32.4mm approx. 224g
Additional Features	Special Features	Creative Video Mode, iA+ Mode, 1-area AF (Flexible / Scalable)	-	Composition Guide, Step Zoom, Food Recognition, AF Macro 3cm	-	

• Yes - No <sup>1</sup> Motion pictures can be recorded continuously for up to 15 minutes in European PAL area. <sup>2</sup> Without battery and SD Memory Card.

					
		DMC-SZ8	DMC-SZ3	DMC-FT5	DMC-FT25
Optics	Effective Pixels	16-Megapixels	16.1-Megapixels	16.1-Megapixels	16.1-Megapixels
	CCD	1/2.33-type CCD Sensor	1/2.33-type CCD Sensor	1/2.33-type High-Sensitivity MOS Sensor	1/2.33-type CCD Sensor
	Aperture	F3.1 - 6.3	F3.1 - F5.9	F3.3 - 5.9	F3.9 - 5.7
	Optical Zoom	12x	10x	4.6x	4x
	Focal Length	f = 4.3 - 51.6mm (24 - 288mm in 35mm equiv.) (26 - 314mm in 35mm equiv. in 16:9 video recording)	f = 4.5 - 45.0mm (25 - 255mm in 35mm equiv.) (29 - 290mm in 35mm equiv. in video recording)	f = 4.9 - 22.8mm (28 - 128mm in 35mm equiv.) (33 - 140mm in 35mm equiv. in video recording)	f = 4.5 - 18.0mm (25 - 100mm in 35mm equiv.) (29 - 100mm in 35mm equiv. in video recording)
Intelligent Zoom	24x	20x	9.3x	8x	
Focus	AF Metering	Face / 1-area / 9-area	Face / AF Tracking / 23-area / 1-area / Spot	Face / AF Tracking / 23-area / 1-area / Spot	Face / AF Tracking / 23-area / 1-area / Spot
Shutter	Shutter Speed	approx. 8 - 1/2000 sec	approx. 4 - 1/1300 sec	approx. 8 - 1/1600 sec	approx. 8 - 1/300 sec
Image Stabilisation	Optical Image Stabilizer for Photo / Movie	O.I.S.	MEGA O.I.S.	POWER O.I.S.	MEGA O.I.S.
	Continuous Shooting Mode	Full-Resolution Image (Unlimited Consecutive Shooting): 1.2 frames/sec	Full-Resolution Image, approx. 1.4 frames/sec	Full-Resolution Image: 10 frames/sec Max. 7 images with AF Tracking; 5 frames/sec, 2 frames/sec Max 100 images Intelligent Burst Shooting	Full-Resolution Image, approx. 1.3 frames/sec
Recording Modes	High-Speed Burst Mode	approx. 3 frames / sec (recorded in 3M for 4.3, 2.5M for 3.2, 2M for 16.9, 2.5M for 1:1)	approx. 10 frames/sec (recorded in 3M for 4.3, 2.5M for 3.2, 2M for 16.9, 2.5M for 1:1)	approx. 40 frames/sec (recorded in 5M/3M/0.3M for 4.3, 4.5M/2.5M/0.3M for 3.2, 3.5M/2.5M/0.3M for 1:1) approx. 40 frames/sec (recorded in 2.5M/0.3M for 4.3, 3M/0.3M for 3.2, 3.5M/0.2M for 16.9, 2M/0.2M for 1:1)	approx. 8 frames/sec (recorded in 3M for 4.3, 2.5M for 3.2, 2M for 16.9, 2.5M for 1:1)
	Exposure	Auto (Programme AE)	Auto (Programme AE)	Programme AE, Manual	Auto (Programme AE)
Recording	ISO Sensitivity	Auto / i.LISO / 100 / 200 / 400 / 800 / 1600 / 3200 High-Sensitivity Mode (ISO 1600 - 6400)	i.LISO / 100 / 200 / 400 / 800 / 1600 / 3200 High-Sensitivity Mode (ISO 1600 - 6400)	Auto / i.LISO / 100 / 200 / 400 / 800 / 1600 / 3200 High-Sensitivity Mode (ISO 1600 - 6400)	i.LISO / 100 / 200 / 400 / 800 / 1600 High-Sensitivity mode (ISO 1600 - 6400)
	Still Picture Recording 1.1 / 4:3 / 3:2 / 16:9	3456x3456 (12M) / 1536x1536 (2.5M EZ)	3456x3456 (12M) / 1536x1536 (2.5M EZ)	3456x3456 (12M) / 2736x2736 (7.5M EZ) / 1920x1920 (3.5M EZ) / 1536x1536 (2.5M EZ) / 480x480 (0.2M EZ)	3456x3456 (12M)
		4608x3456 (16M) / 3264x2448 (8M EZ) / 2048x1536 (3M EZ) / 640x480 (0.3M EZ)	4608x3456 (16M) / 3264x2448 (8M EZ) / 2048x1536 (3M EZ) / 640x480 (0.3M EZ)	4608x3456 (16M) / 3648x2736 (10M EZ) / 2560x1920 (5M EZ) / 2048x1536 (3M EZ) / 640x480 (0.3M EZ)	4608x3456 (16M) / 3648x2736 (10M EZ) / 2560x1920 (5M EZ) / 2048x1536 (3M EZ) / 640x480 (0.3M EZ)
		4608x3072 (14M) / 3264x2176 (7M EZ) / 2048x1360 (2.5M EZ)	4608x3072 (14M) / 3264x2176 (7M EZ) / 2048x1360 (2.5M EZ)	4608x3072 (14M) / 3648x2736 (10M EZ) / 2560x1920 (5M EZ) / 2048x1536 (3M EZ) / 640x480 (0.3M EZ)	4608x3072 (14M) / 3648x2736 (10M EZ) / 2560x1920 (5M EZ) / 2048x1536 (3M EZ) / 640x480 (0.3M EZ)
		4608x2592 (12M) / 1920x1080 (2M EZ)	4608x2592 (12M) / 1920x1080 (2M EZ)	4608x2592 (12M) / 3648x2056 (7.5M EZ) / 2560x1440 (3.5M EZ) / 1920x1080 (2M EZ) / 640x360 (0.2M EZ)	4608x2592 (12M)
HD Movie Recording (max resolution) AVCHD / Motion JPEG	1280x720 pixels, 30fps (HD/Motion JPEG)	1280x720 pixels, 24 fps (HD/Motion JPEG)	1920x1080 pixels, 50p (FHD: 28Mbps/AVCHD) (Sensor Output is 50fps) 1920x1080 pixels, 25p (FHD: 20Mbps/MP4) (Sensor Output is 25fps) 1280x720 pixels, 25p (HD: 10Mbps/MP4) (Sensor Output is 25fps)	1280x720 pixels, 25 fps (HD: 10Mbps/MP4)	
Zoom in Motion Picture	•	•	•	•	
Picture Effects	Colour Mode	-	Standard, Black&White, Sepia, Vivid (Normal only), Happy (only in iA Mode)	Standard, Black&White, Sepia, Vivid (in P, M), Happy (only in iA Mode)	Standard, Black&White, Sepia, Vivid/Normal only), Happy (only in iA Mode)
	Creative Control	15 filter effects	14 filter effects	14 filter effects	12 filter effects
Other	Digital Red Eye Correction (Red-Eye Removal)	• (On / Off)	• (On / Off)	•	•
Playback	Display	Normal Play, Slide Show, Category Selection, Calendar	All, Slideshow, Filtering Play (Picture Only, Video Only, 3D Play, GPS Area Play, Travel, Category Selection, Select Date, Favourite), Calendar	All, Slideshow, Filtering Play (Picture Only, Video Only, 3D Play, GPS Area Play, Altimeter Log, Travel, Category Selection, Select Date, Favourite), Calendar	All, Slideshow, Filtering Play (Picture Only, Video Only, 3D Play, GPS Area Play, Altimeter Log, Travel, Category Selection, Select Date, Favourite), Calendar
	Monitor	7.5cm (3.0") TFT Screen LCD Display (460K dots)	6.7cm (2.7") TFT Screen LCD Display (230K dots)	7.5cm (3.0") TFT Screen LCD Display (460K dots), AR Coating	6.7cm (2.7") TFT Screen LCD Display (230K dots)
Others	Flash	•	•	•	•
	Audio	Mono / Mono	Mono / Mono	Stereo / Mono	Mono / Mono
	Interface	- / - / • / • (Multi)	- / - / • / • (Multi)	• / - / • / • (Multi)	- / - / • / • (Multi)
	Power	Li-ion Battery Pack (3.6V, 690mAh, 2.5 Wh) (Included) AC Adaptor (Input: 110 - 240V AC) (Included, connect with USB cable)	Li-ion Battery Pack (3.6V, 690mAh / 2.5Wh) AC Adaptor (Input: 110 - 240V AC) (Included, connect with USB cable)	Li-ion Battery Pack (3.6V / 1250mAh / 4.5Wh) AC Adaptor (Input: 110 - 240V AC) (Optional)	Li-ion Battery Pack (3.6V / 680mAh / 2.5Wh) AC Adaptor (Input: 110 - 240V AC) (Optional)
	Metrics	200 pictures (CIPA Standard) <sup>1</sup>	250 pictures (CIPA Standard) <sup>1</sup>	370 pictures (CIPA Standard) <sup>1</sup>	250 pictures (CIPA Standard) <sup>1</sup>
Additional Features	-	Approx. 144g	Approx. 111g	Wi-Fi / NFC / Built-in GPS	